

GC710 Fixed Flammable / Toxic Gas Detector

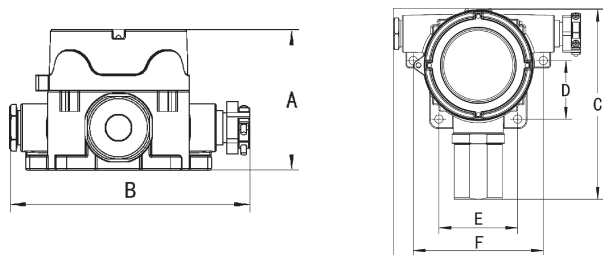
- Designed with the latest international technology
- All GC710 are approved CE and ATEX in accordance with the EN European standards
- The GC710 can be used in environments where toxic gas or flammable gas presents, like oil, petrochemical, and other dangerous and heavy industries.

Features

- **Easy to use**
 - Protection class: IP66
 - One man operation
 - Self test on start
 - Transmitter platform as standard
- **Cost effective**
 - Competitive price
 - Low maintenance cost
 - Replaceable sensor
 - Easy training
 - Reduced installation cost
- **High performance**
 - 4-20mA signal output
 - Catalytic combustion sensor for combustible gas
 - Electrochemical sensor for toxic gas
 - Designed with latest international sensor technology
 - 95 db sound alarm (optional)
 - Fast and accurate response
- **Large range of sensors**
 - H2S, CO, H2, O2, EX, ETO, CO2, VOC, EX...
- **Accessories**
 - Audible and visual alarm
- **Approvals**
 - Ex d IICT6
 - DNV10 ATEX 78798
 - EN 60079-0, EN 60079-1
- **Warranty**
 - 1 year



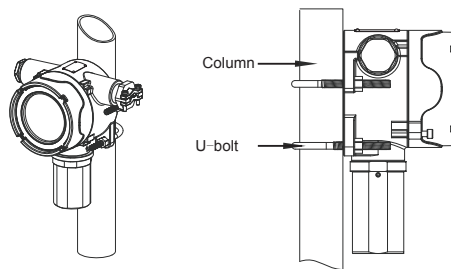
Dimensions



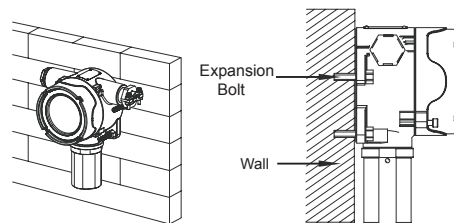
Unit: mm

	GC7X0 Toxic Gas	GC7X0 Ex	GC7X0P Toxic Gas	GC7X0A Toxic Gas
A	103	103	103	103
B	183	183	183	183
C	180	164	212	180
D	55.5	55.5	55.5	55.5
E	75	75	75	75
F	124	124	124	124
Weight	710:2.1 kg	710:1.9kg	710P:2.3 kg	710A:1.9 kg

Installation

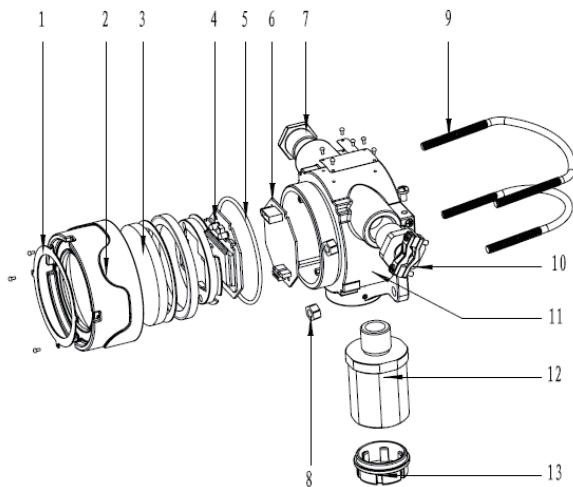


Pipe installation (Pipe diameter: 35-69mm)



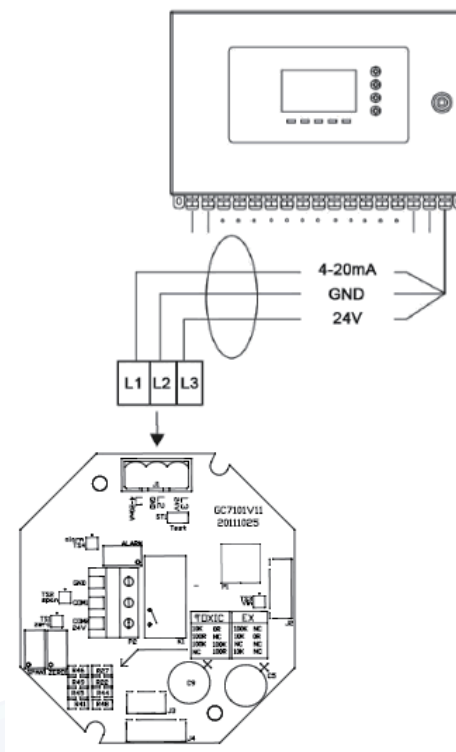
Wall Mounted (Drilling diameter: 6mm)

Structure



ITEM	DESCRIPTION	ITEM	DESCRIPTION
1	Nameplate	8	Nut
2	Top Head of Shell	9	U-bolt
3	Explosion-proof Toughened Glass(GC720)	10	Gland
4	LCD Board	11	Bottom Cover of Housing
5	Seal Ring	12	Sensor Block Assembly
6	Soleplate	13	Splash Guard
7	Screw Plug		

Wirings



Combustible Gas

Performance Parameter

	Range (ppm)	Resolution (ppm)	Response Time (T ₉₀) (s)	Explosion-proof Rating / Model		
				d/GC7X0	d+ia/GC7X0P	ia/GC7X0A
H ₂ S	100	1	<45	✓	✓	✓
	1000	1	<45	✓	✓	✓
CO	1000	1	<45	✓	✓	✓
	2000	1	<45	✓	✓	✓
SO ₂	20.0	0.1	<30		✓	✓
NO	300	1	<30		✓	✓
NO ₂	20.0	0.1	<40		✓	✓
Cl ₂	20.0	0.1	<40		✓	✓
HCl	20.0	0.1	<60		✓	✓
H ₂	1000	1	<90	✓	✓	✓
NH ₃	100	1	<40		✓	✓
	1000	1	<40		✓	✓
HCN	50.0	0.1	<40		✓	✓
O ₃	1.00	0.01	<60		✓	✓
PH ₃	5.0	0.1	<30		✓	✓
O ₂	30 %vol	0.1 %vol	<30	✓	✓	✓
EX		1%LEL	<30	✓		

* d: Flameproof detector

* ia: Intrinsic safety detector (Should be equipped with safeguard)

* d+ia: Intrinsic safety with built-in safeguard+flameproof detector

Order Information

GC710

P/N	Product	Range	P/N	Product	Range	P/N	Product	Range
A291171H	EX Detector	0-100%LEL	A271101T	NO Detector	0-1000ppm	A2711450	HCN Detector	0-50ppm
A261171H	EX Detector (Anti-poisoning)	0-100%LEL	A2711120	NO ₂ Detector	0-20ppm	A271151H	NH ₃ Detector	0-100ppm
A291081H	H ₂ S Detector	0-100ppm	A2710920	SO ₂ Detector	0-20ppm	A271151T	NH ₃ Detector	0-1000ppm
A291071T	CO Detector	0-1000ppm	A291161T	H ₂ Detector	0-1000ppm	A291211H	Infrared Ex Detector	0-100%LEL
A2910530	O ₂ Detector	0-30%VOL	A2711320	HCL Detector	0-20ppm	A2910405	Infrared CO ₂ Detector	0-5%VOL
A2711220	CL ₂ Detector	0-20ppm	A2710605	O ₃ Detector	0-5ppm			
A271101H	NO Detector	0-100ppm	A2711805	PH ₃ Detector	0-5ppm			

*Please contact us for other detectable gas range and parameters.

Related Accessories

P/N	Accessory	P/N	Accessory	P/N	Accessory
A7911001	Ultra-mini. Audible and visual alarm	G411410101	CH ₄ Standard gas (4L/bottle)	G420920013	Special mounting bracket for the drilling screw detectors
A8910001	Zener barrier	G411410201	H ₂ S Standard gas (4L/bottle)	G420920014	General fast connector (for cable, 2 pairs of ordinary type)
G421310001	Explosion proof audible and visual alarm(big)(circumscribed)	G411420001	Pressure reducing valve flow meter	G420920018	Water-proof fast connector (for cable, 1 general pair at the mainframe; 1 water-proof pair at the sensor)
G421310002	Explosion proof audible and visual alarm(small) (circumscribed)	G420920007/8/9	Screened cable (2-core)	G420920017	Explosion-proof fast connector (for cable, 1 general pair at the mainframe; 1 explosion-proof pair at the sensor)
G420920010/11	Screened cable (3-core)				